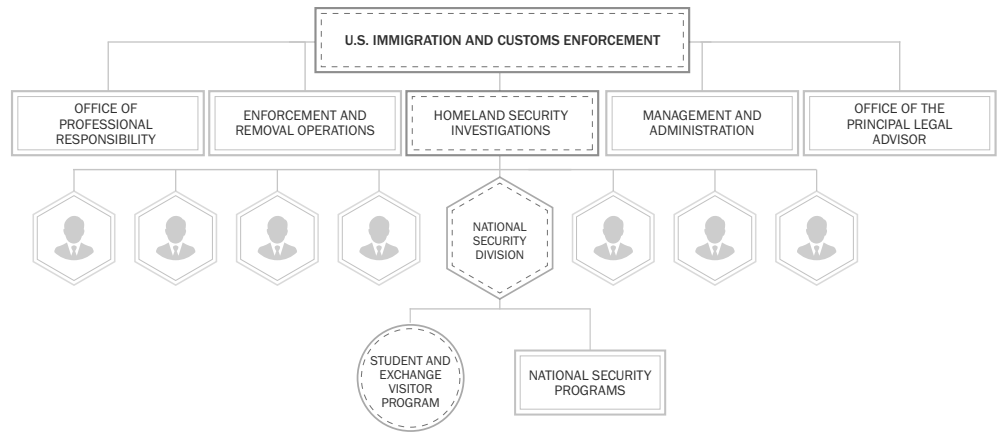


SEVP

STUDENT AND EXCHANGE VISITOR PROGRAM

SEVP MISSION

U.S. Immigration and Customs Enforcement's (ICE) Student and Exchange Visitor Program (SEVP) provides integrity to the United States immigration system by collecting, maintaining and analyzing information so only legitimate nonimmigrant students or exchange visitors gain entry into the United States. SEVP ensures the institutions accepting nonimmigrant students are certified, and follow the federal rules and regulations that govern them.



INTERNATIONAL STUDENTS AND SCHOOLS

SEVP manages the Student and Exchange Visitor Information System (SEVIS), a web-based information system that maintains and allows monitoring of the following records:

- SEVP-certified schools.
- F-1 and M-1 nonimmigrant students and their dependents.
- Exchange visitor program sponsors.
- J-1 exchange visitors and their dependents.*

INTRAGOVERNMENTAL COORDINATION

SEVP works closely with its government partners involved in the international student process, including U.S. Citizenship and Immigration Services (USCIS), U.S. Customs and Border Protection (CBP) and the U.S. Department of State.

Working with partner law enforcement agencies, SEVP administratively enforces federal rules and regulations governing schools certified to enroll F and M nonimmigrant students.

- The U.S. Department of State issues visas for travel to the United States, including student visas.
- USCIS authorizes changes of status, training opportunities and some employment benefits for international students.
- CBP admits international students to the United States at U.S. ports of entry.

*The U.S. Department of State manages exchange visitor programs, nonimmigrant exchange visitors in the J visa classification and their dependents.

CONTACT INFORMATION

SEVP Response Center



Contact for general and case-specific questions:
Telephone: 703-603-3400
Email: SEVP@ice.dhs.gov



To report criminal activity:
Visit: [ICE.gov/Tips](https://ice.dhs.gov/Tips)
Telephone: 1-877-4-HSI-TIP